



CERAMAGE
meets digital

THE microhybrid veneering concept



■ CERAMAGE

■ CERAMAGEUP



Harmonious interaction

The world of dental technology is ever-changing – and so are the requirements and wishes of dental technicians with regard to materials and equipment. This is why it is particularly important to us to make everyday work in the dental laboratory as easy as possible for you.

CERAMAGE and CERAMAGE UP are two light-cured microhybrid composites designed to combine the benefits of composites and ceramics in one material. As needed or desired, CERAMAGE can be sculpted with a spatula, and CERAMAGE UP directly using the dispenser, and the two can even be applied together.

In combination with the light-cured, fluorescent LITE ART paste stains, these veneering materials offer unlimited creative options. Whether used on resins, composites, prefabricated teeth or other framework materials – they help you to easily adapt and create internal shade modifications, since the shades can be applied in thin, almost ceramic-like layers.



HIGHLIGHTS

- Almost unlimited range of indications
- Efficient and easy reproduction of all tooth shades, based on the VITA* Classical shade system
- Natural aesthetics and opalescence
- High strength and abrasion resistance
- Reliable bonding to various dental alloys and ceramic or hybrid ceramic framework materials with CERARESIN BOND bonding system and SHOFU Universal Primer
- Excellent polishability and surface density

Whether used alone or together – The perfect choice for every indication

CERAMAGE and CERAMAGE UP, used alone or together, are highly stable, elastic and particularly aesthetic. This allows them to cover a wide range of indications, from durable, visually pleasing anterior and posterior restorations to temporary crowns.



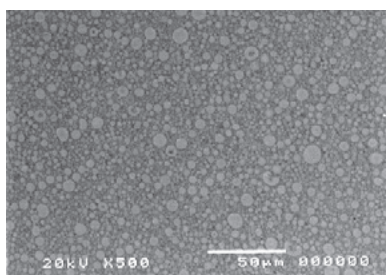
Indications

- Fully veneered crowns and bridges
- Fully veneered telescopic and implant suprastructures
- Attachment works
- Occlusal veneering
- Inlays / onlays
- Veneers
- Long term temporaries
- Characterisation of denture teeth

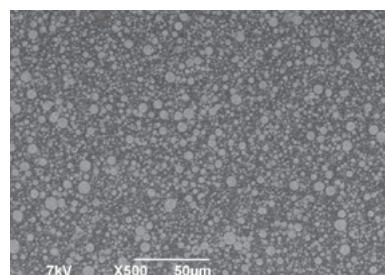


Uniquely different

The ceramic fillers in the matrix give CERAMAGE and CERAMAGE UP ceramic-like characteristics. The homogeneously compacted ultrafine particle structure features well-balanced hardness, abrasion resistance and flexural strength. In addition, the reliable bond to frameworks and the shade stability of both materials ensure high aesthetics and durability.



The homogeneous microstructure gives CERAMAGE ceramic-like characteristics



Thanks to its homogeneous and compacted ultrafine particle structure, CERAMAGE UP is both flowable and sculptable.

Coordinated shade concept

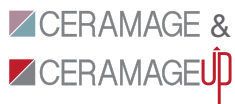
CERAMAGE and CERAMAGE UP form a modular veneering system in which the shades of all the components are well-matched to each other. The wide range of Translucent, Incisal, Concentrate and Gum materials offers you all the options you need to master any aesthetic challenge.

Basic shades

Shade	A1	A2	A3	A3.5	A4	rootA	B1	B2	B3	B4	C1	C2	C3	C4	D2	D3	D
SHOFU UNIVERSAL OPAQUE	PreO (Pre-Opaque)																
SHOFU UNIVERSAL OPAQUE	A1O	A2O	A3O	A3.5O	A4O	rootAO	B1O	B2O	B3O	B4O	C1O	C2O	C3O	C4O	D2O	D3O	D4O
CERVICAL	—	AC1	AC2	—	—	—	BC1	BC2	—	—	CC1	CC2	—	—	DC1	DC2	—
OPAQUE DENTIN	ODA1	ODA2	ODA3	ODA3.5	ODA4	ODrootA	ODB1	ODB2	ODB3	ODB4	ODC1	ODC2	ODC3	ODC4	ODD2	ODD3	ODD4
BODY	A1B	A2B	A3B	A3.5B	A4B	rootAB	B1B	B2B	B3B	B4B	C1B	C2B	C3B	C4B	D2B	D3B	D4B
INCISAL	58	59	60	—	—	—	57	58	59	60	58	59	60	59	60	59	58

correspond to the VITA* Classical shade system

Whitening shades



Shade	W0	W1	W2	W3
SHOFU UNIVERSAL OPAQUE	PreO (Pre-Opaque)			
SHOFU UNIVERSAL OPAQUE	W0	W1	W2	W3
BODY	W0B	W1B	W2B	W3B
INCISAL	56	57	—	—

Using the Whitening shades W0 to W3, which are equivalent to the VITA* shades OM1 to OM3, even patients' wishes for bleached teeth can be met.

Effect and gum shades



SHOFU UNIVERSAL OPAQUE	MO	BO	GO	WO	GUM-O	BO	VpO	VpO	PtO	PreO
TRANSLUCENT	T	HVT	LVT	T-Glass	BG	GT	CT-A	CT-B	CT-R	—
INCISAL	56	57	58	59	60	61	—	—	—	—
CONCENTRATE	MI	WE	OC	AM-Y	AM-R	AM-V	MY	MP	—	—
GUM	GUM-L	GUM-D	GUM-Or	GUM-T	—	—	—	—	—	—

Effect and gum shades



SHOFU UNIVERSAL OPAQUE	MO	BO	GO	WO	GUM-O	BO	VpO	VpO	PtO	PreO
TRANSLUCENT	T	HVT	LVT	T-Glass	BG	GT	CT-A	CT-B	—	—
INCISAL	56	57	58	59	60	—	—	—	—	—
CONCENTRATE	MY	WE	OC	AM-Y	W	—	—	—	—	—
GUM	GUM-L	GUM-D	GUM-Or	GUM-Br	GUM-V	GUM-R	GUM-LP	GUM-DP	GUM-SP	GUM-P

Versatile system

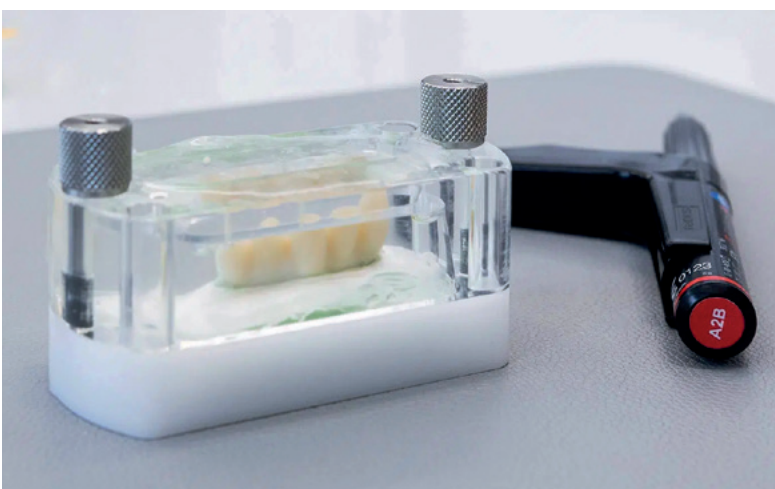
The **layering technique** can be used to individually imitate any remaining natural teeth. The opalescent Effect and Incisal materials are applied in a targeted way. For additional colour accents, the LITE ART paste stains are available.



WORKFLOW OF LAYERING TECHNIQUE



The **injection technique** is great for replicating milled wax-ups or mock-ups with CERAMAGE UP. The desired tooth shape stays the same and can be reproduced 1:1. Large restorations with many veneered surfaces, in particular, can be quickly created in this technique. Full-contour restorations can also be quickly and easily customised with a cut-back and subsequent pressing-over with CERAMAGE UP.



WORKFLOW OF INJECTION TECHNIQUE





Sometimes the situation or the type of restoration requires the production of gingival parts – patients with a "gummy smile" particularly appreciate a customised gingiva.

STEEPCARD
"PINK THE GUM"



Even prefabricated teeth may pose a challenge. CERAMAGE, CERAMAGE UP and LITE ART provide valuable support when using prefabricated teeth to close an edentulous space and trying to closely match them to the adjacent natural teeth.



There are many ways to achieve your goal, but what ultimately counts is the result.

Our trio of CERAMAGE, CERAMAGE UP and LITE ART offers you excellent options to easily create aesthetically demanding restorations and give your patients a radiant smile.





CERAMAGE meets digital

Traditional craftsmanship meets digital efficiency

CERAMAGE, CERAMAGE UP and LITE ART can be applied to a large variety of dental materials, including PMMA, zirconia, hybrid ceramics, non-precious alloys, 3D-printed frameworks etc.

The key to success is proper bonding! Combine our trio with CERARESIN BOND (CRB) or SHOFU Universal Primer together with SHOFU Universal Opaque (PRE-OPAQUE) to individualise and aesthetically enhance a wide range of materials.



Our "CERAMAGE meets digital" concept offers you countless options – for results that will impress both you and your patients!

CERAMAGE on zirconia

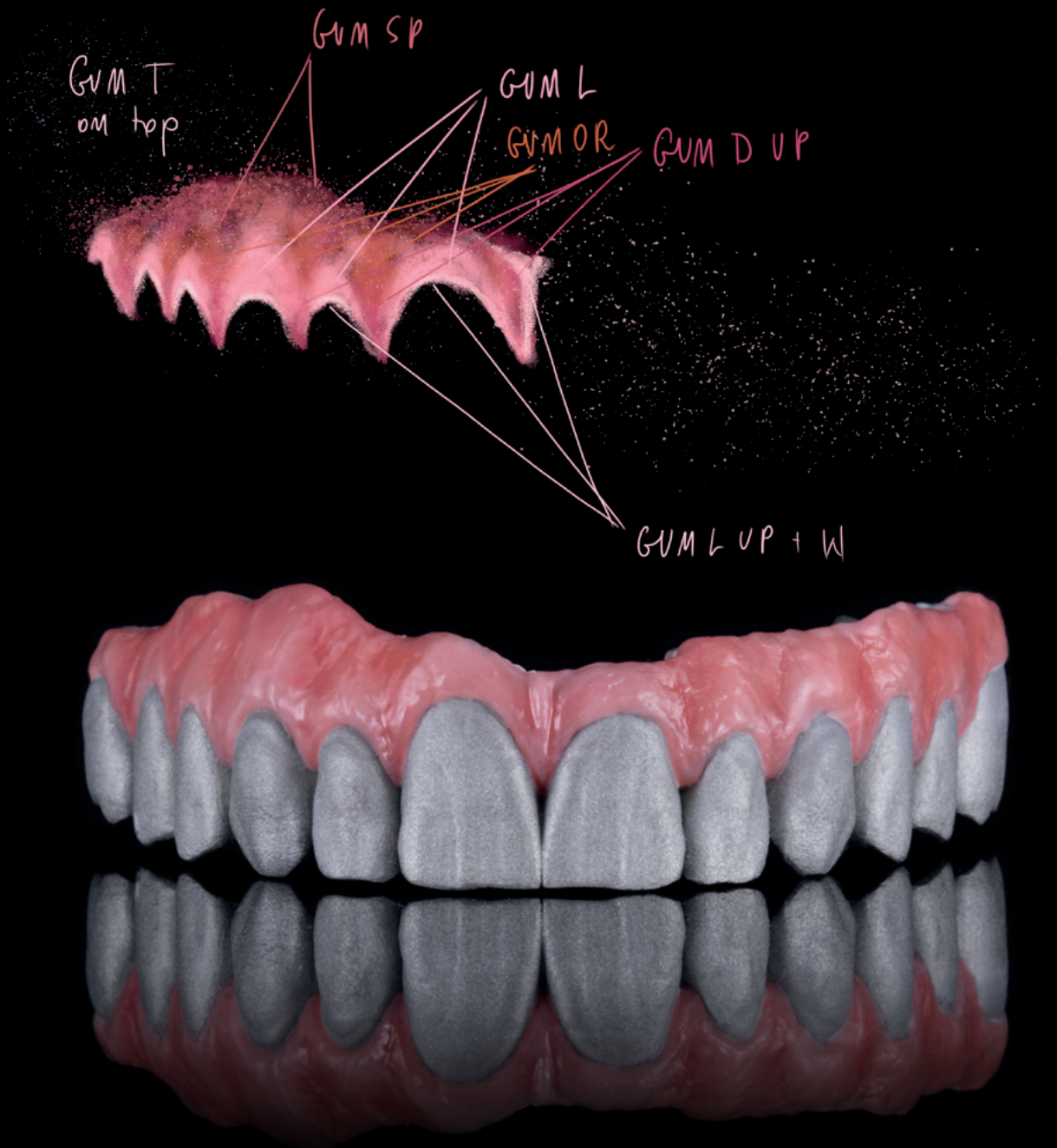


Step by step

- Apply SHOFU Universal Primer to surface blasted with alumina (Al_2O_3 / 50-100 μm , 2-3 bar) and leave undisturbed for 10 sec
- Apply SHOFU Universal Opaque (PRE-OPAQUE) and light-cure
- Apply SHOFU Universal Opaque (OPAQUE) in the desired shade and light-cure
- Veneer framework with CERAMAGE, CERAMAGE UP and individualise with LITE ART paste stains



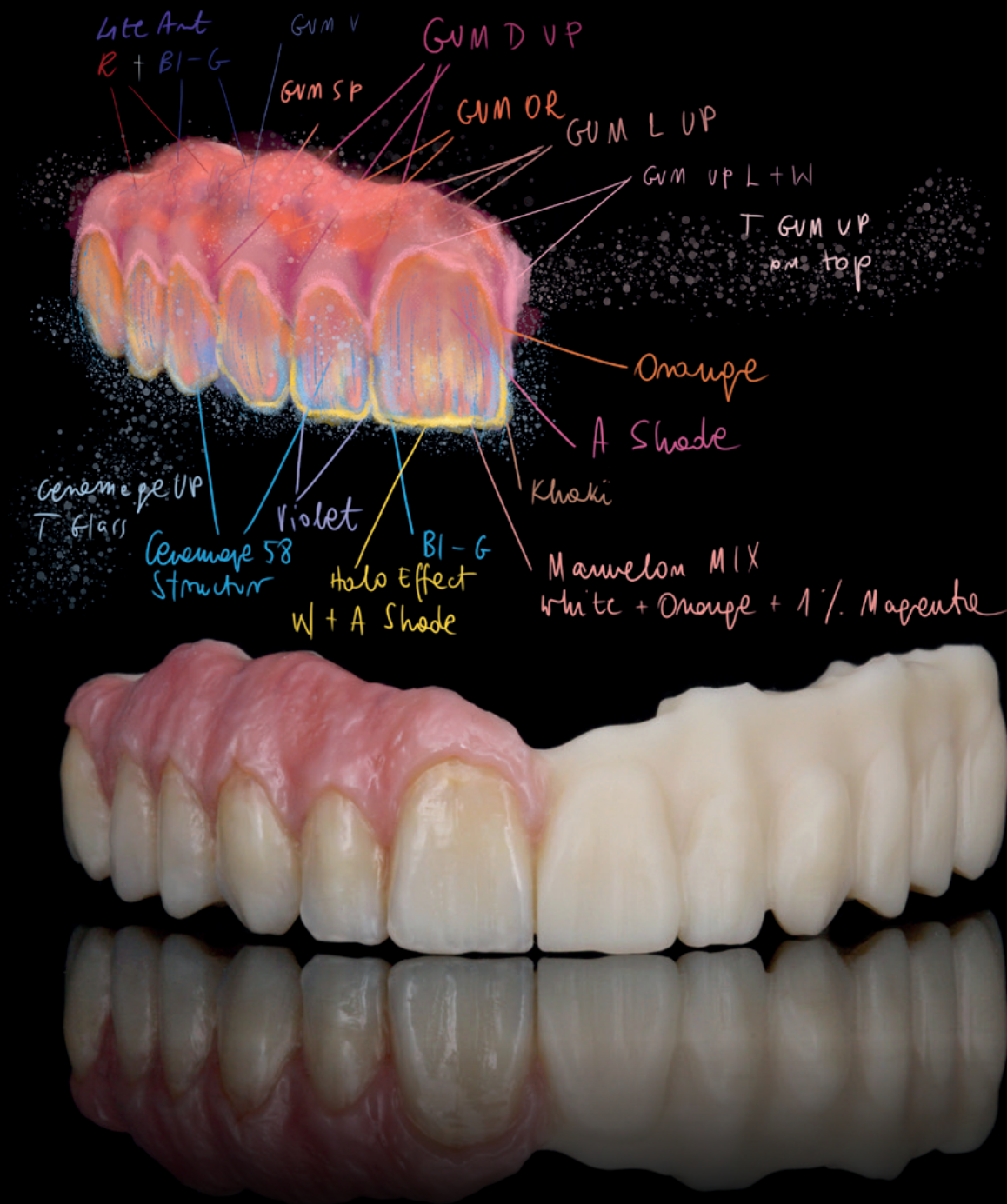
CERAMAGE on non-precious alloys



Step by step

- Apply SHOFU Universal Primer to surface blasted with alumina (Al_2O_3 / 50-100 μm , 2-3 bar) and leave undisturbed for 10 sec
- Apply SHOFU Universal Opaque (PRE-OPAQUE) and light-cure
- Apply SHOFU Universal Opaque (OPAQUE) in the desired shade and light-cure
- Veneer framework with CERAMAGE, CERAMAGE UP and individualise with LITE ART paste stains

CERAMAGE on PMMA

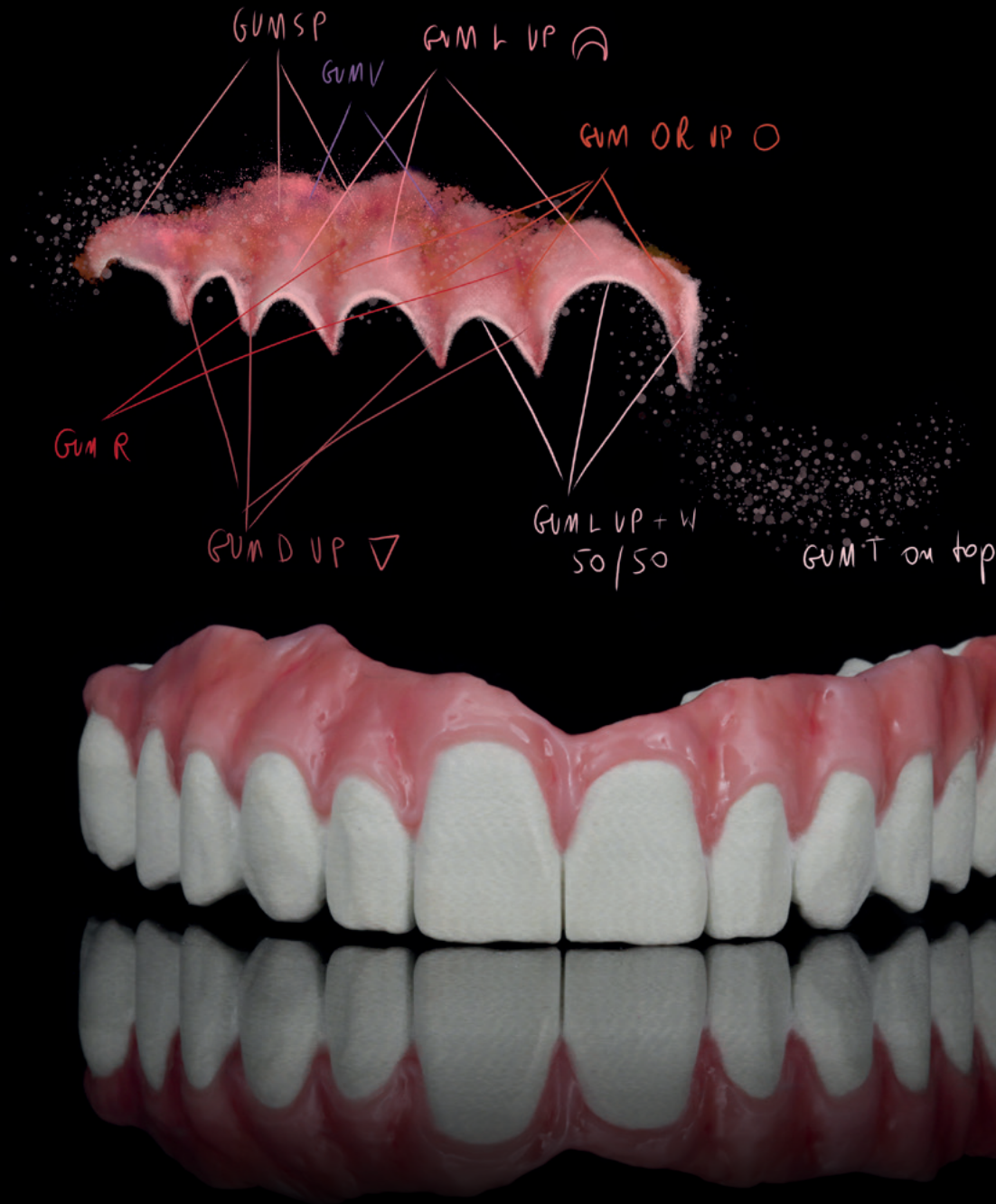


Step by step

- Apply CRB 1 to surface blasted with alumina (Al_2O_3 / 50-100 μm , 2-3 bar) and leave undisturbed for 10 sec
- Apply CRB 2 to entire surface and light-cure
- Veneer framework with CERAMAGE, CERAMAGE UP and individualise with LITE ART paste stains



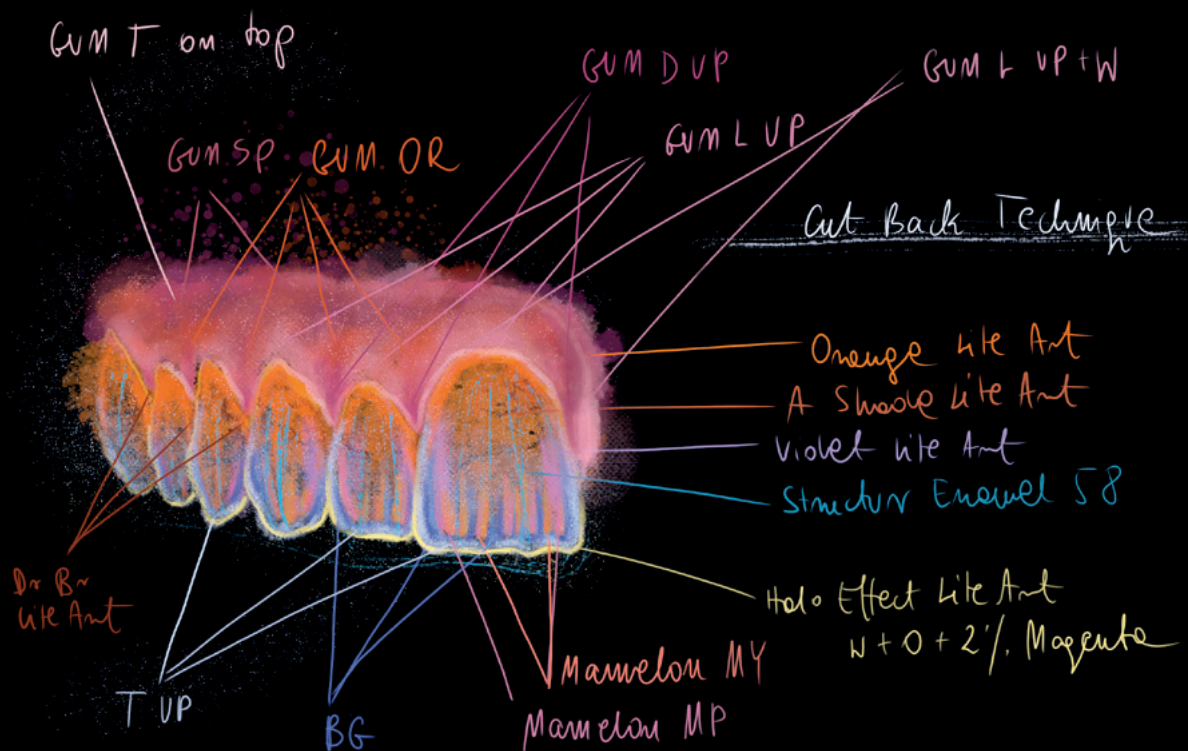
CERAMAGE on glass fiber



Step by step

- Apply CRB 1 to surface blasted with alumina (Al_2O_3 / 50-100 μm , 2-3 bar) and leave undisturbed for 10 sec
- Apply CRB 2 to entire surface and light-cure
- Veneer framework with CERAMAGE, CERAMAGE UP and individualise with LITE ART paste stains

CERAMAGE on hybrid ceramics

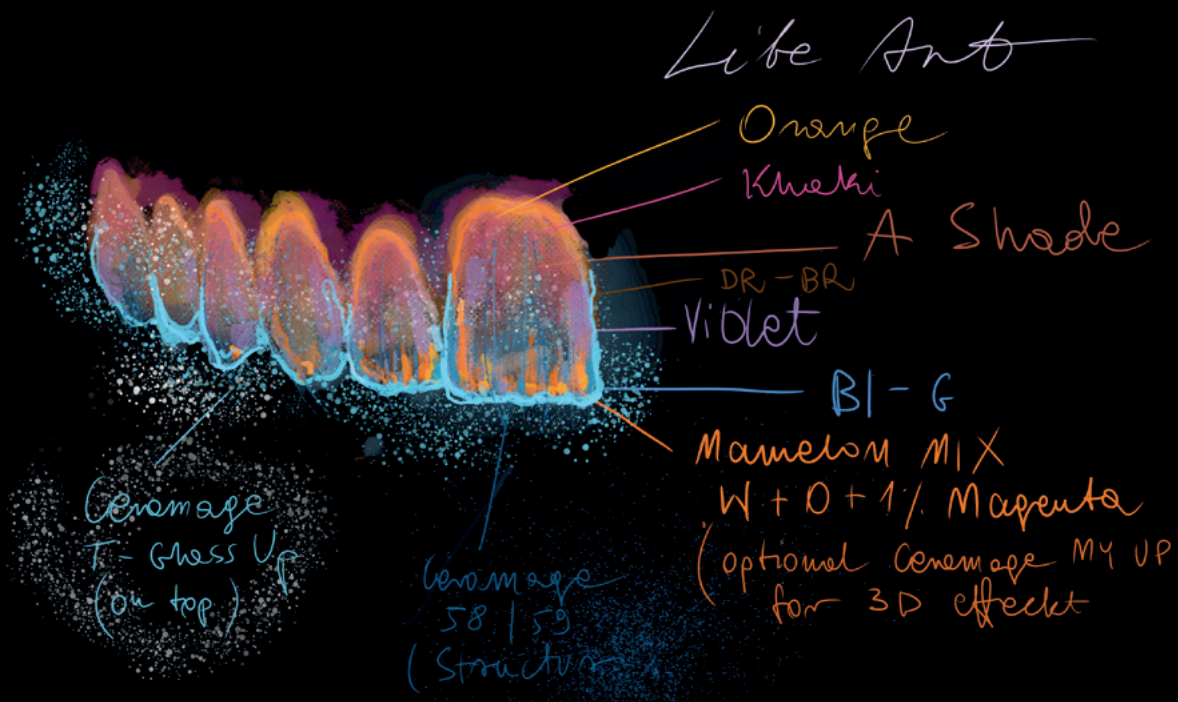


Step by step

- Apply CRB 1 to surface blasted with alumina (Al_2O_3 / 50-100 μm , 2-3 bar) and leave undisturbed for 10 sec
- Apply CRB 2 to entire surface and light-cure
- Veneer framework with CERAMAGE, CERAMAGE UP and individualise with LITE ART paste stains



CERAMAGE on 3D-printed frameworks

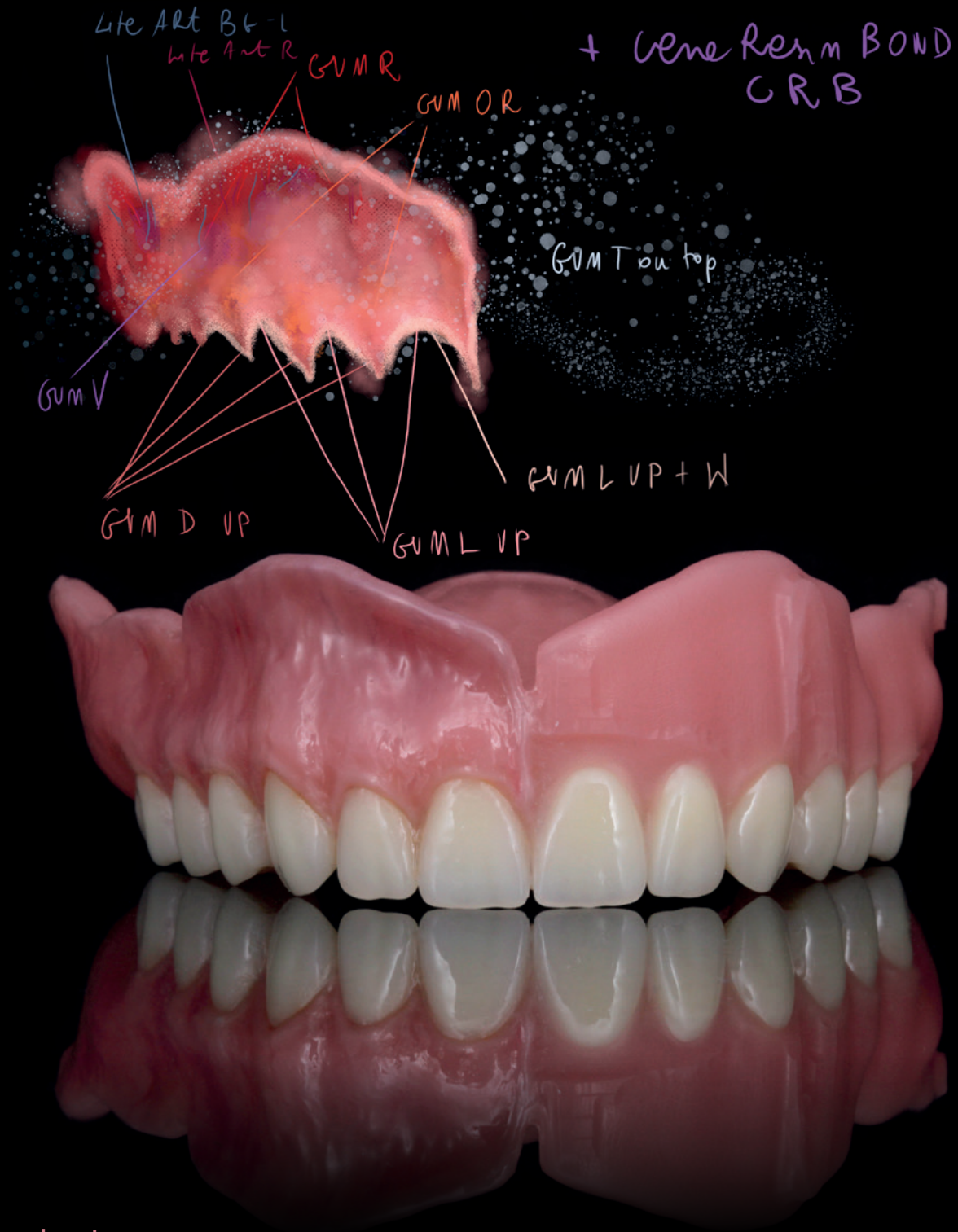


Step by step

- Apply CRB 1 to surface blasted with alumina (Al_2O_3 / 50-100 μm , 2-3 bar) and leave undisturbed for 10 sec
- Apply CRB 2 to entire surface and light-cure
- Veneer framework with CERAMAGE, CERAMAGE UP and individualise with LITE ART paste stains



CERAMAGE on denture bases



Step by step

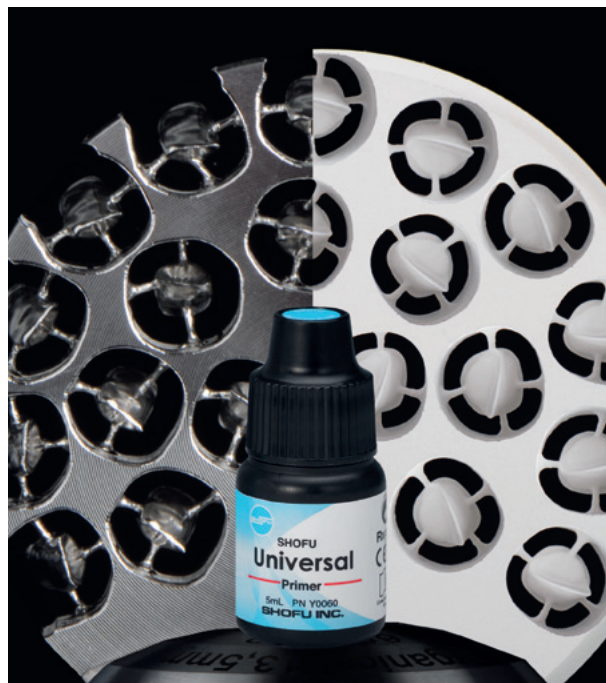
- Apply CRB 1 to surface blasted with alumina (Al_2O_3 / 50-100 μm , 2-3 bar) and leave undisturbed for 10 sec
- Apply CRB 2 to entire surface and light-cure
- Veneer framework with CERAMAGE, CERAMAGE UP and individualise with LITE ART paste stains

The perfect adhesive bond

SHOFU Universal Primer reliably bonds resins to all dental alloys, zirconia and alumina.

In combination with SHOFU Universal Opaque (PRE-OPAQUE), the primer ensures a durable bond and even eliminates the need for mechanical retention on metal frameworks.

WEBSITE
SHOFU Universal Primer



The **CERARESIN BOND (CRB)** system can be used to create reliable and long-lasting bonds between a wide variety of materials.

CRB is designed to excellently and durably bond light-cured and self-cured resins to all ceramic veneering materials.

WEBSITE
CERARESIN BOND (CRB)

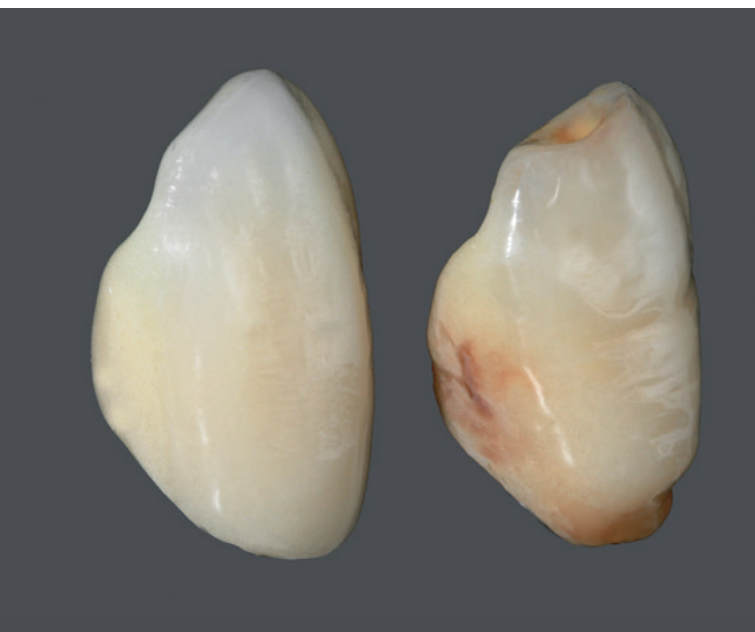


Light-curing creativity

Be it classic composite veneering, long-term temporaries or prefabricated teeth – LITE ART paste stains help you to realise individual solutions that will meet the highest requirements of your patients.



Upon application, the light-cured LITE ART paste stains already impress thanks to their microfine particle structure, homogeneous consistency and exceptional opacity, even when used in thin layers. Create the finest accents in a precise and vivid way simply by layering the polymerised stains with Incisal or Translucent materials.



Indications

- **Characterisation of ceramic reinforced and conventional composites as well as hybrid ceramics**
crowns / bridges, veneers, inlays / onlays
- **Colour adaptation of artificial teeth**
composite teeth, acrylic teeth
- **Individualisation of denture bases**
partial dentures, gingiva coloured composite of telescopic and implant works, total dentures
- **Harmonisation of temporary frameworks and tooth-coloured resins**
PMMA frameworks, long-term temporaries

LITE ART paste stains have a fluorescence quite similar to natural teeth. Their natural effect persists even under artificial light conditions.



Under natural light conditions



Even dark colours show vital and natural reflections under ultraviolet light

LITE ART

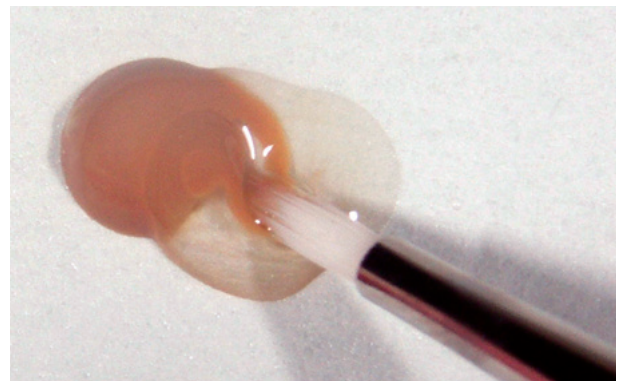
Colour concept

Shade		Example of use					
	Code	Shade adjustment	Cervical	Stain	Stain	Gum	Colour mixing
White	W			●	●		●
Black	B	●		●			●
Red	R					●	●
A-Shade	AS	●	●				
B-Shade	BS	●	●				
Khaki	K		●	●			
Orange	O	●	●	●			
Blue Gray	BI-G				●		
Violet	V	●			●	●	
Orange Brown	O-Br		●	●	●		
Dark Red Brown	DR-Br		●	●			
Black Brown	B-Br		●	●			
Cyan	Cyan						●
Magenta	Magenta						●
Yellow	Yellow						●

All LITE ART paste stains can be used individually or mixed. All individual colours can be achieved by mixing the primary colours of cyan, magenta and yellow.

Twelve premixed colours and shades imitating the colour effects of natural teeth and the pigmentation of the gingiva are available for characteristic colouring.

HOW TO USE
LITE ART



LITE ART Clear Liquid can be used to reduce the colour intensity and adjust the viscosity of the paste.

Order information



SHOFU Universal Opaque



Shade	REF 2 ml
SHOFU UNIVERSAL OPAQUE	
PRE-OPAQUE	2111
W0	2100
W20	2101
W30	2102
A10	2080
A20	2081
A30	2082
A3.50	2083
A40	2084
B10	2085
B20	2086
B30	2087
B40	2088
C10	2089
C20	2090
C30	2091

Shade	REF 2 ml
SHOFU UNIVERSAL OPAQUE	
C40	2092
D20	2093
D30	2094
D40	2095
rootAO	2096
R20	2097
R30	2098
R3.50	2099
GUM-O	2103
BGO (Blue Grey)	2104
GO (Grey)	2105
MO (Margin)	2106
InO (Incisal)	2107
VpO	2108
VrO	2109
PO	2110

Shade	REF 4.6 g
BODY	
W0B	1924
W1B	1925
W2B	1926
W3B	1927
A1B	1901
A2B	1902
A3B	1903
A3.5B	1904
A4B	1905
rootAB	1917
B1B	1906
B2B	1907
B3B	1908
B4B	1909
C1B	1910
C2B	1911
C3B	1912
C4B	1913
D2B	1914
D3B	1915
D4B	1916
R2B	1918
R3B	1919
R3.5B	1920

OPAQUE DENTIN	
ODA1	1851
ODA2	1852
ODA3	1853
ODA3.5	1854
ODA4	1855
ODrootA	1867
ODB1	1856
ODB2	1857
ODB3	1858
ODB4	1859
ODC1	1860
ODC2	1861
ODC3	1862
ODC4	1863
ODD2	1864
ODD3	1865
ODD4	1866
ODR2	1868
ODR3	1869
ODR3.5	1870

Shade	REF 4.6 g
CERVICAL	
AC1	1881
AC2	1882
BC1	1883
BC2	1884
CC1	1885
CC2	1886
DC1	1887
DC2	1888

CERVICAL TRANSLUCENT	
CT-A	1937
CT-B	1938
CT-R	1939

INCISAL	
56	1891
57	1892
58	1893
59	1894
60	1895
61	1896

TRANSLUCENT	
T	1931
HVT	1932
LVT	1933
T-Glass	1934
BG	1935
GT	1936

COLOR EFFECT	
MI	1951
WE	1952
OC	1953
AM-Y	1954
AM-R	1955
AM-V	1956
MY	1957
MP	1958

GUM	
GUM-T	1940
GUM-L	1959
GUM-D	1960
GUM-Or	1961

Sets

	REF
CERAMAGE SETS	
CERAMAGE Gum Color Full Set	Y1804U
CERAMAGE Standard Set	Y1806U
CERAMAGE Intro Set, shade A2	Y1807U
CERAMAGE Intro Set, shade A3	Y1808U
CERAMAGE UP SETS	
CERAMAGE UP 8 Color Set	2305
CERAMAGE UP 2 Color Set	2306

Please note the detailed application instructions for CERAMAGE, CERAMAGE UP or LITE ART in the respective "Advanced product information"!



Shade	REF 5 g
BODY	
W0B	2331
W1B	2332
W2B	2333
W3B	2334
A1B	2335
A2B	2336
A3B	2337
A3.5B	2338
A4B	2339
rootAB	2340
B1B	2341
B2B	2342
B3B	2343
B4B	2344
C1B	2345
C2B	2346
C3B	2347
C4B	2348
D2B	2349
D3B	2350
D4B	2351
OPAQUE DENTIN	
ODA1	2311
ODA2	2312
ODA3	2313
ODA3.5	2314
ODA4	2315
ODrootA	2316
ODB1	2317
ODB2	2318
ODB3	2319
ODB4	2320
ODC1	2321
ODC2	2322
ODC3	2323
ODC4	2324
ODD2	2325
ODD3	2326
ODD4	2327

Shade	REF 5 g
CERVICAL	
AC1	2381
AC2	2382
BC1	2383
BC2	2384
CC1	2385
CC2	2386
DC1	2387
DC2	2388
INCISAL	
56	2355
57	2356
58	2357
59	2358
60	2359
TRANSLUCENT	
T	2361
HVT	2362
LVT	2363
T-Glass	2364
BG	2365
GT	2366
CT-A	2367
CT-B	2368
COLOR EFFECT	
MY	2371
WE	2372
OC	2373
AM-Y	2374
W	2375
GUM	
GUM-L	2391
GUM-D	2392
GUM-Or	2393
GUM-Br	2394
GUM-V	2395
GUM-R	2396
GUM-DP	2397
GUM-LP	2398
GUM-P	2399
GUM-SP	2400
GUM-T	2369



Shade	REF 1 ml
LITE ART	
LITE ART Full Set	1970
LITE ART Clear Liquid	1986
White (W)	1971
Black (B)	1972
Red (R)	1973
Khaki (K)	1976
Orange (O)	1977
Blue Gray (BI-G)	1978
Violet (V)	1979
Orange Brown (O-Br)	1980
Dark Red Brown (DR-Br)	1981
Black Brown (B-Br)	1982
Cyan	1983
Magenta	1984
Yellow (Y)	1985
A-Shade (AS)	1974
B-Shade (BS)	1975

LITE ART Clear Liquid is not suitable for bonding.

Accessories

	REF
CERAMAGE Modelling Liquid, 6 ml	1991
CERAMAGE Separator (Sep), 7 ml	1993
CERAMAGE Spacer, 7 ml	1994
CERAMAGE UP grip for syringe (dispenser)	2401
Tips with caps, 50 pcs.	2405
CERAMAGE Stand UP	1900
UNIVERSAL OXY-BARRIER, 10 g	2403
Paper pad, 50 sheets each, 2 pcs.	1206
Pro-Pad mixing pad, 30 sheets each, 2 pcs.	2402
Spatula	1593
Uni Brush No. 4 (1 handle and 10 brush tips)	1586
Uni Brush No. 5 (1 handle and 10 brush tips)	1988
Light shield cover	1592
Dispo dish, 10 pcs.	1594

Order information

Related products



SHOFU Universal Primer

For reliable bonding of composites to various dental alloys, zirconia and alumina

REF Y0060



Dura-Polish

Impregnated with fine alumina particles (more than 73 % by weight); for prepolishing and polishing

REF 0552



Dura-Polish DIA

Filled to an extremely high level (67 % by weight) with industrial diamond particles; for high-lustre polishing

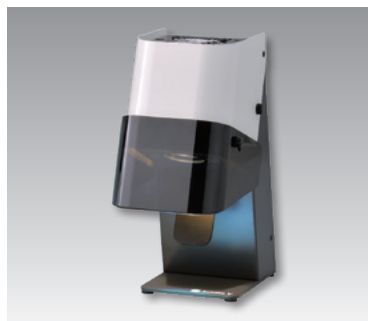
REF 0554



CRB – CERARESIN BOND

For durable bonding between composites, resins and ceramics without any compromise

REF 1741N



Sublite V

For efficient and gentle pre-polymerisation

REF 5108



Solidilite LED

Powerful LED light-curing unit with broad band of wavelengths for light-cured veneering composites

REF E031

* VITA is a registered trademark of VITA Zahnfabrik, Bad Säckingen, Germany.



SHOFU INC. 11 Kamitakamatsu-cho, Fukuine, Higashiyama-ku, Kyoto 605-0983, Japan
SHOFU DENTAL GmbH An der Pönt 70, 40885 Ratingen, Germany, www.shofu.de

SHOFU is a registered trademark of SHOFU INC. All other trademarks and registered trademarks are the property of their respective holders. SHOFU INC. reserves the right to change specifications without notice.